

CIBO LABS WORKSHOP

For improved grazing land management

**THURSDAY 7
DECEMBER** | **10.00AM - 2.00PM**
BERRIMAH FARM - JOHN ENGLAND BUILDING

 Catering provided
Registration is required

Increase your understanding of how satellite remote sensing can be used to estimate feed supply and monitor changes in land condition. This will enable improved grazing land management and forage budgeting to optimise productivity and sustainability across the pastoral industry.

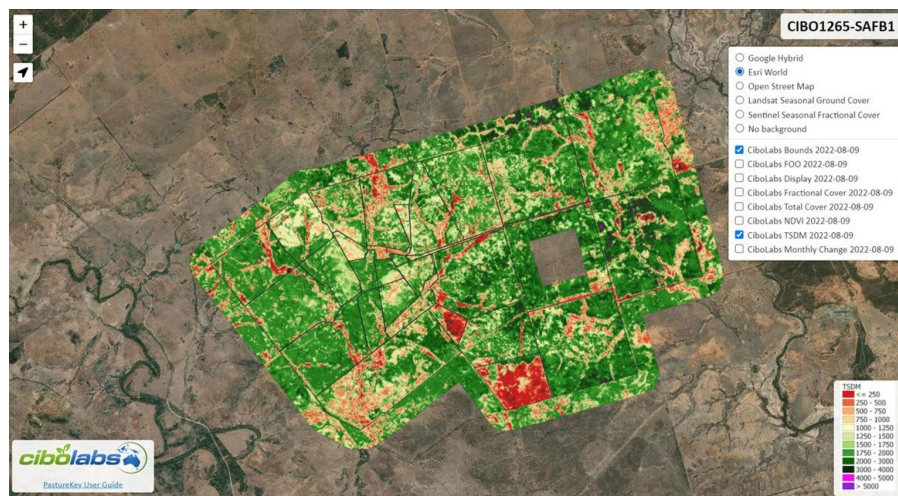
Please join us for a half-day workshop to explore how Cibo Labs tools can help improve your understanding of land condition and pasture availability. The workshop will provide training in the following.

- The Australian Feedbase Monitor
- PastureKey Service
- Territory Land Viewer

Please confirm your attendance by emailing matt.fogarty@territorynrm.org.au

The workshop will provide hands-on use of the tools for assessing and reporting on the impact of the recent fires and rapidly changing seasonal conditions. Attendees will be informed on how to use the Cibo Labs Australian Feedbase Monitor tool so they can apply this information to assess pasture availability for the upcoming dry season.

The workshop will be presented by Cibo Labs founder and CEO, Phil Tickle, who has over 30 years of applying technologies to land management.



All you need to bring for the day is a laptop and a mobile phone.



You are welcome to take notes, photos and are encouraged to share your experience.

For more information:

 08 8942 8300

 info@territorynrm.org.au

 www.territorynrm.org.au